

a 155

H.L. Hubbell Buried Saturday

Herald L. Hubbell, 89, of 61 W. Central Ave., Zeeland, died Monday, June 18, at his home.

Hubbell, who retired in 1974 after a long career as a Michigan furniture manufacturer, was founder of the H.L. Hubbell Co., which was formed in Grandville in 1927 to manufacture radio cabinets. In 1933 the company moved to Grand Rapids, where tables were added to its product line. The manufacturing company was moved in 1940 to Zeeland and was long noted for the "Hubbell File Chest," a filing cabinet for the home, made in many woods and finishes.

Hubbell was instrumental in establishment of Grand Haven Harbor Industries and the Fleetwood Furniture Company.

He was a member of Wealthy Street Baptist Church, Grand Rapids, for more than 50 years.

His wife, Mabel, died in 1982. They had been married for 65 years. Two sons also preceded him in death, Warner in 1934 and Norwood in 1973.

Surviving are a daughter-in-law, Mrs. Helen Jacobusse of Grand Haven; six grandchildren, Craig Hubbell, aboard his sloop, Windchime; Keith Hubbell of West Covina, Calif.; Diane Brower of France; Gail Van Dyke of Littleton, Colo.; Holly Fann of Aroma Park, Ill.; and Kim Palma of Grand Rapids; seven great-granddaughters; seven great-grandsons; five sisters, Hazel Marsh and Mary Geis, both of Spearfish, S.D.; Helen Huth of Phoenix, Ariz.; Maxine Schenck of Denver, Colo.; Mildred Laug of Yakima, Wash.; and a brother, Maurice Hubbell of Evanston, Ill.

Funeral services were held Saturday with Dr. Keith Hubbell officiating. Burial was in Rosedale Memorial Park.

ZEELAND

Page 4

H.L. Hubbell Dies At Age 89

Herald L. Hubbell, 89 of 61 West Central Ave. died on Monday morning, June 18 at his home.

Mr. Hubbell was owner and operator of the H.L. Hubbell Mfg. Co. prior to his retirement.

Funeral arrangements had not been made by presstime on Wednesday. They will be announced later by Yntema Funeral Home.

"Zeeland Record"

June 1984

<Bg>

Obits of
a 155 Herald
+ wife

June 21, 1984 Sec. F
P. 5

HUBBELL — Herald L. Hubbell, aged 89, of 61 West Central Ave., Zeeland, died Monday morning at his home. He was a member of Wealthy Street Baptist Church in Grand Rapids. Surviving are his daughter-in-law, Mrs. Helen Jacobusse of Grand Haven; six grandchildren, Craig Hubbell aboard his sloop Windchime, Keith Hubbell of West Covina, CA, Diane Brower of France, Gail VanDyke of Littleton, CO, Holly Fann of Aroma Park, IL, Kim Palma of Grand Rapids; seven great-granddaughters and seven great-grandsons; five sisters, Hazel Marsh and Mary Geis both of Spearfish, SD, Helen Huth of Phoenix, AZ, Maxine Schenck of Denver, CO, Mildred Laug of Yakima, WA; one brother, Maurice Hubbell of Evanston, IL. Funeral services will be held at 1pm Saturday at Yntema Funeral Home, Dr. Keith Hubbell officiating. Burial in Rosedale Memorial Park. Calling hours at Yntema Funeral Home, Zeeland, are Friday 7 to 9pm. Contribu-



The Grand Rapids Press,

Mon Oct 25, 1982
Sec. E P. 7

HUBBELL — Mrs. Mabelle Hubbell, aged 88, of 61 W. Central Ave., Zeeland, passed away Sunday morning following a short illness. Surviving are her husband, Herald; one daughter-in-law, Mrs. Helen Jacobusse of Grand Haven; six grandchildren, 13 great grandchildren; two brothers, Floyd Norwood of Minnesota, and Glenn Norwood of Washington. Two sons, Norwood and Warner Hubbell, preceded her in death. Funeral Services will be held 1 pm Wednesday at Yntema Funeral Home, Zeeland, Dr. Keith Hubbell and Dr. D.O. Fuller officiating. Burial in Rosedale Memorial Park. Calling hours at the funeral home Monday and Tuesday 7 to 9 pm.

Mrs. H.L. Hubbell

RAY & MABEL HUBBELL
827 W Forest Avenue
Muskegon, Michigan 49441

H.L. HUBBELL
MANUFACTURING COMPANY
ZEELAND, MICHIGAN

Chestable

DUAL PURPOSE CHEST & TABLE

It's new . . . it's amazingly versatile and adaptable . . . it makes living space go twice as far! Our new Chestable converts in 10 short seconds from a handsome, decorative server or room divider into a sturdy, practical dining table for six. You'll be surprised how little it costs — at big direct-from-factory savings!



DUAL-PURPOSE DINING-KITCHEN Furniture

H.L. HUBBELL

MANUFACTURING COMPANY
ZEELAND, MICHIGAN

H



HIGH QUALITY LINE of FURNITURE
Beautifully Styled



REALLY SAVE BY BUYING DIRECT FROM FACTORY

Typewriter Desks

STYLED FOR THE HOME

Designed to fit into the atmosphere of your rooms. Distinctive styling in a personal typewriter desk that brings utility to the home, the study, the reception room or the professional office. These desks are top quality, hand rubbed, finished smoothness all around. Homespoken in a beautiful smoothness all around. Homespoken in a beautiful smoothness all around. Homespoken in a beautiful smoothness all around.

In all the models the left pedestal carries your typewriter within handy reach. This unit is specially engineered with a sturdy pull-out has an angle size knob for portable typewriter. The center drawer designed for stationery. The right pedestal has a top full letter size file drawer, and a full letter size file drawer with alphabetical index.



Stationery Drawer

This is the right hand top drawer designed with four partitions that slide in at an angle to create convenient spaces for your stationery, second sheets and carbon paper. The upright partition at the front gives a 4" deep space for envelopes.



Adjustable Portable Typewriter Holder
Four "L" shaped clips are attached to the top of the desk. Blocks at the side allow for width adjustment. A stop knob at the front holds the typewriter in place when lowered for storage. On the other side the port opened into position, in either the case of the typewriter held in still portable and can be only moved from the desk.)



No. 540-TYP
MODERN TYPEWRITER DESK

Made in Mahogany — dark traditional or blond finish; Walnut — regular or frosted grey finish; Oak — in lined oak finish; Maple in clear or Savoy finish. Overall height 28", width 50", depth 24½". Shipping weight 170 lbs.

Note: When ordering specify if for standard or portable typewriter. The adjustable portable holder is omitted when standard typewriter is used. Standard typewriters can be placed personally in the drop leaf shell.



No. 501-TYP
TYPEWRITER DESK

18th Century in Mahogany — dark traditional finish; in Walnut — regular finish. Oval ball pulls as shown.

Modern in Mahogany — blond finish; Walnut — in frosted grey finish; Oak in lined oak finish. With square brass hardware as shown on our No. 500-A File Chest.

Early American in Maple — Savoy finish. Early American hardware as shown on our No. 506-3 File Chest.

Overall height 28", width 50½", depth 25½". Shipping weight 170 lbs.

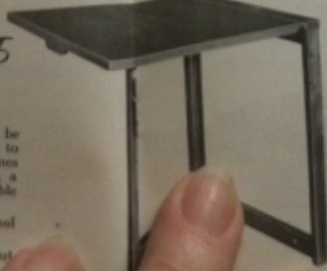
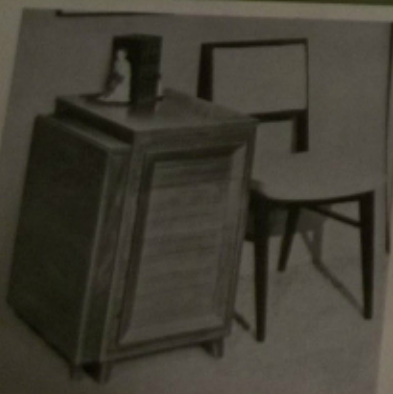


No. 50 Drop Leaf Typewriter Support \$17.95

To be used with any Hubbell File Chest

For convenience plus — this drop leaf support can be added with 4 screws to either side of the file chest to become a space-saver desk. When raised it becomes a desk for typing, a dressing table it becomes a serving table for television snacks, perfect for a portable sewing machine, or many other uses.

- Mahogany — blond or dark traditional finish.
- Walnut — frosted grey or regular walnut finish.
- Oak — lined oak finish.
- Maple — regular finish.



Closed: 27" high, 2½" wide, 20½" deep.
Open: 27" high, 25¼" wide, 20½" deep.
Shipping weight 25 lbs.
*Specify choice — right or left hand side.

Example:

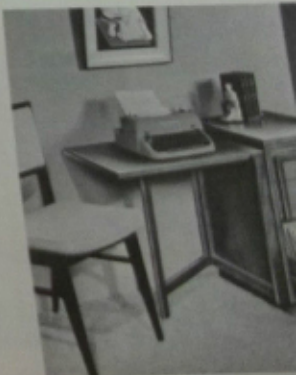
When used with No. 503-3 File Chest as shown, the overall width is 41".

Combined price as shown

No. 50 Drop Leaf Support (Left hand) \$17.95

No. 503-3 File Chest 39.90

\$57.85



as chair fabric, or other material requested in the description.
TAX NOTICE — Michigan residents add 3% to amount of your order for sales tax.

The safest and best ways to send money are Postal, Express or Bank Money Orders or simply send your own personal check.

SATISFACTION GUARANTEED

In case a piece comes through damaged in shipment, first call the transportation company that delivered the goods. That company will send out an inspector and he will make out a damage report. Then you send the damage report to us and we will make out a claim. At the same time we will send a new piece to you prepaid. When the new piece arrives have the trucking company pick up the damaged piece and return it to us collect.

TRUCK FREIGHT RATES FOR STATE OF MICHIGAN ONLY

Rates listed below include 7% surcharge and 3% sales tax, and are for door to door service. If the city in which you live is not listed below, take the rate for the city nearest you for your estimated rate.

From Zeeland to the following Michigan Points:	Less 100/	101-150/	151-200/	201-250/	251-300/
Ann Arbor.....	2.64	3.10	3.57	4.04	4.50
Battle Creek.....	2.34	2.69	2.98	3.33	3.63
Bay City.....	2.64	3.10	3.57	4.04	4.50
Detroit.....	2.74	3.28	3.74	4.21	4.68
Flint.....	2.57	3.04	3.45	3.86	4.26
Jackson.....	2.46	2.86	3.28	3.68	4.09
Kalamazoo.....	2.21	2.51	2.80	3.15	3.38
Muskegon.....	2.16	2.46	2.69	2.98	3.21
Pontiac.....	2.64	3.10	3.57	4.04	4.50
Traverse City.....	2.74	3.28	3.74	4.21	4.68

We can ship by truck to the following States. The rates vary as per type of furniture, as shown in the table below. The rates given are a state average, and may be higher or lower for a given city.

	Chests Bookcases & Servers	Desks & Tables	Chairs
Illinois.....	\$1.97	\$2.93	\$3.41
Indiana.....	1.89	2.83	3.32
Ohio.....	2.52	3.01	3.51
Wisconsin.....	2.19	3.26	3.79
Kentucky.....	2.37	3.54	4.13

The rates listed above are for 100 lbs., and are minimum rates. There is also a \$1.50 charge per shipment, which covers door to door service.

EXAMPLE: An order for two No. 500 Chests, two No. 205 Chairs to Illinois would be figured out as follows:

2 No. 500 Chests @ 75 lbs. = 150 lbs.
 150 x \$1.97 = \$2.85
 2 No. 205 Chairs @ 25 lbs. = 50 lbs.
 50 x \$3.41 = 1.71

\$4.56

Plus \$1.50 charge per shipment

\$6.06



Your HUBBELL furniture comes to you in a specially designed protective package which insures safe shipment. It must arrive at your home in the same perfect condition as when it left our factory. Much engineering, time and money have been spent so that you will be satisfied.

Many points in the following states are served by Carloading Companies. The rate listed is a state average, and may be higher or lower to a given city. These rates are for 100 lbs., and are minimum rates. Any shipment under 100 lbs. still pays the 100 lb. rate. Shipments of over 100 lbs. are figured on a fraction basis. (Example: Rate \$2.00 per 100 lbs. A desk of 150 lbs., would cost 1½ times the rate, or \$3.00). The following rates cover door to door service.

Alabama.....	4.28	Nevada.....	9.22
Arizona.....	7.53	New Hampshire.....	4.76
Arkansas.....	7.75	New Jersey.....	4.55
California.....	7.75	New Mexico.....	7.12
Colorado.....	5.32	New York.....	3.64
Connecticut.....	4.48	North Carolina.....	3.72
Delaware.....	4.73	North Dakota.....	4.28
Florida.....	5.95	Oklahoma.....	4.80
Georgia.....	4.58	Oregon.....	7.73
Idaho.....	8.84	Pennsylvania.....	3.86
Iowa.....	2.78	Rhode Island.....	4.61
Kansas.....	3.87	South Carolina.....	4.50
Louisiana.....	5.03	South Dakota.....	4.11
Maine.....	5.37	Tennessee.....	3.99
Maryland.....	4.55	Texas.....	6.16
Massachusetts.....	4.13	Utah.....	7.32
Minnesota.....	2.82	Vermont.....	4.61
Mississippi.....	4.66	Virginia.....	4.85
Missouri.....	3.19	Washington.....	7.14
Montana.....	6.65	West Virginia.....	4.29
Nebraska.....	4.07	Wyoming.....	6.10

ABOVE RATES ARE SUBJECT TO CHANGE WITHOUT NOTICE.

New Dining Group with Extension Table

Answering the requests for an extension dining table we offer this contemporary piece. For added interest we've added a china, a server, a four drawer chest, and a commode all on legs to create a pleasing new group. We believe, when you note the prices, that you will agree with our contention that attractive quality furniture need not be expensive.

Note: All of the pieces featured on these two pages (26 and 27) are available in the same finishes and hardware as on our Console Dining Group on page 22.



No. 250
EXTENSION DINING TABLE

\$124.95

The soft curved lines of the $1\frac{1}{2}$ " thick top, the rounded and slightly splayed legs, along with the sculptured effect of the under rail, combine into a graceful table for today's living. Closed — 66" long x 42" wide x 30" high. (Seats 8)
Extended with three 12" leaves becomes 102" long. (Seats 12)
Shipping weight 175 lbs.

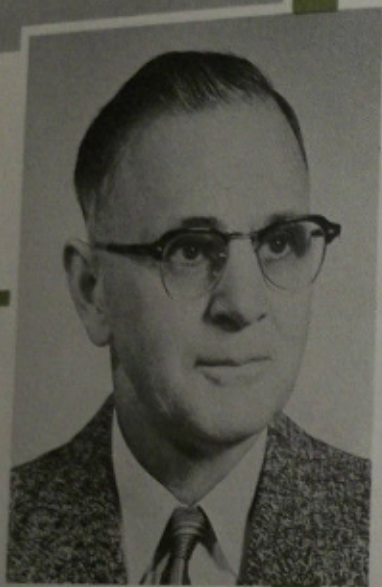
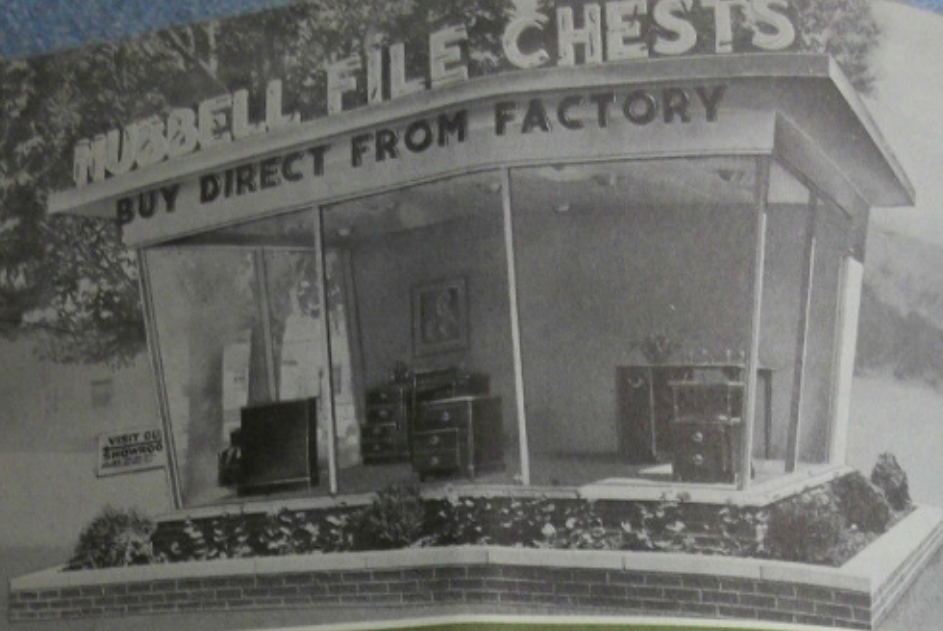
Save-buy direct!
H.L. HUBBELL
MANUFACTURING COMPANY
CHICAGO, ILLINOIS

No. 240
COMMODE

\$47.95

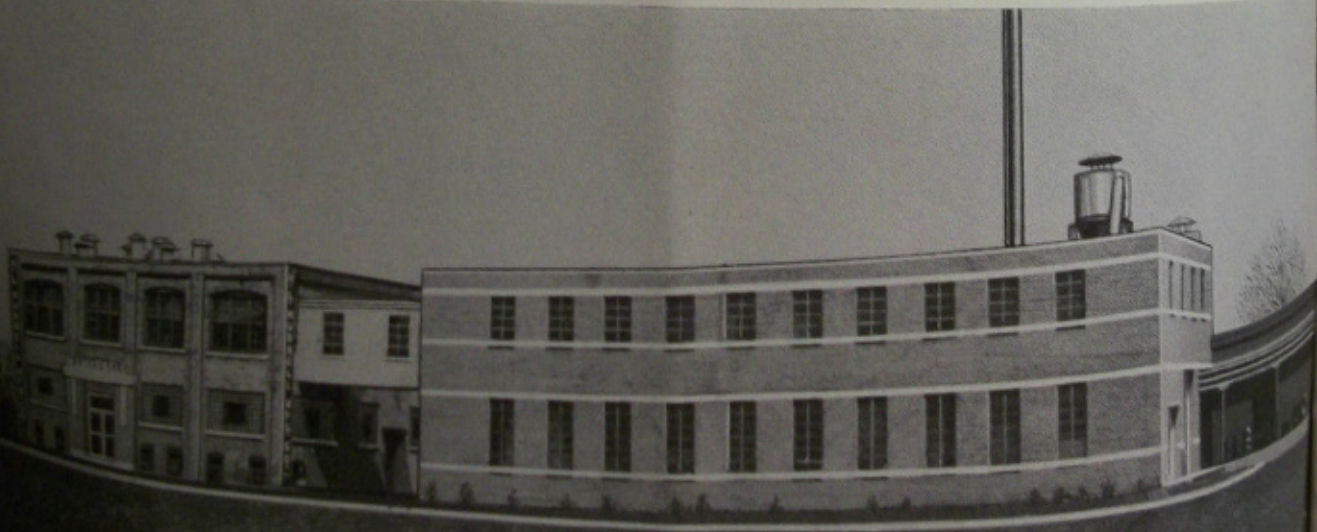
Same as the No. 230 Commode except for the higher leg base.
Overall height 33", width 36", depth 19"
Approximate shipping weight 70 lbs.





WE OFFER STYLED-RIGHT, PRICED-RIGHT FURNITURE AT A SAVINGS. Within these buildings is manufactured the finest of furniture. Craftsmen, old in the trade, fashion, with the skill of years, exclusive pieces which embody highly decorative and functional qualities that are not found in other furniture. Together with our unique method of direct selling, this quality has fostered a growing acceptance that amazes even those dedicated to this new plan of providing quality furniture direct-from-factory at a saving.

In the few years we have been selling furniture on a direct-to-you basis, Hubbell pieces have been sent to all parts of the United States. Today, customers everywhere are telling their friends, displaying their purchases from us, and continually creating new interest in Hubbell products. The requests for literature have grown to such proportions that this catalog has become necessary.



designing
insisted that raw

advertisements... getting the finest for less.
you pay the small freight charges but save large "middle-man-p
OUR FACTORY!



L-
F
S

**WE TAKE PRIDE
IN OUR WORKMANSHIP - -**

Our File drawers have a wood follower block sliding on a metal rod. The drawer sides and back are in oak with a locked dove-tail construction. Side...
S...
S...

Locks are available at \$2.00 each.

You'll Love the BEAUTY, VERSATILITY and CONVENIENCE of the HUBBELL

Chestable
THE HUBBELL COMPANY • NEW YORK

... IN YOUR HOME OR APARTMENT



Here it is, the Chestable — an unusual appearance of functional convenience that stands as a symbol of modern living. It's a chest that can be converted into a table in a matter of minutes. It's a chest that can be converted into a table in a matter of minutes. It's a chest that can be converted into a table in a matter of minutes.



A touch of the finger releases and extends the mechanical "spring frame" top part of which serves as a table panel. This is a mechanical device that holds the convertible storage device extended when the top is down — and at once the table and legs slide out in plastic, noise-free.



It will also use the Chestable for serving coffee, breakfast, games, correspondence. Here it is extended as a breakfast table for food preparation — stable, easily detachable with its full-length expansion hinges and legs that never fold until you want them for ease in clean-up and when they are folded return looking like new.



For dining the extension has given you a surface of inches long by 30 inches wide — enough to hold an occasion. You'll see the top is finished with a material that is stain resistant, washable and plastic with a finish that is as beautiful as it is practical. It's a material that is as practical as it is beautiful. It's a material that is as practical as it is beautiful.

Ready to Serve... FROM CHEST TO TABLE IN 3 EASY STEPS!



You save nearly HALF the COST when you buy DIRECT from HUBBELL

Thousands of happy, satisfied customers keep our reputation high — bringing us the double satisfaction of customer satisfaction and direct factory selling policies. By concentrating on a number of important practical features — we have built up a name of wide appeal. By spreading the manufacturing costs over a wide area of distribution — we offer you the best value in furniture that's built and finished to the highest standards of craftsmanship.

DETAILS OF HUBBELL'S No. 70 TWO-DRAWER CHESTABLE

Table, back panels, drawer faces and ends are of another design — especially selected for fine grain and figure, in a beautiful hand-rubbed finish.

Chest top and table top are of available, heat-resistant, mechanical furniture in form design of soft beige color. Table top has full-width piano hinges.

Height 30". Width 30". Depth (closed) 24". Table surface, 30" by 40". Total depth, table fully extended, 50". Carefully packed and crated for delivery in perfect condition. Approximate shipping weight 100 pounds.

DIRECT FACTORY PRICE ONLY

\$104⁹⁵

H.B.C. Distributors: Chicago: American Road 275, Room 100

IENCE of the **HUBBELL**
OR APARTMENT



...stable for sewing, craft
 ...ence. Here it is employed
 ...and preparation — stable,
 ...a full-length piano-type
 ...fold until you want
 ...soup and water keep the
 ...to new.

5 Y STEPS!

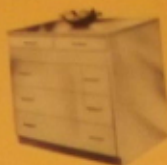
For dining, the
 46 inches long by
 six in comfort
 protected by Fo
 dishes and platt
 silver is conven
 drawers, divid

Chestable

DUAL PURPOSE CHEST & TABLE

*De-Luxe Five-Drawer
 Model No. 75*

Here our space-saving Chestable reaches new heights of capacity and convenience. With no increase in over-all dimensions, three spacious full-length drawers are added — tuck-away storage space that's priceless to the small home and apartment dweller. Yes, the shelves shown in Model 70 are now replaced. But the twin drawers above remain, and may be operated from either side.



Details, Model No. 75: Same as for Model 70, EXCEPT: Three additional drawers, each 32 $\frac{3}{4}$ " long by 17 $\frac{1}{4}$ " wide by 6 $\frac{1}{2}$ " high (inside dimensions). Two upper drawers each 22" by 15 $\frac{1}{8}$ " by 5". All drawer pulls of special modern design, smartly ebonized. Approximate shipping weight, 200 pounds.

LOW DIRECT-FACTORY PRICE ONLY

\$131.⁷⁵

F.O.B. Zeeland, Michigan (Michigan Residents Add 3% Sales Tax)

IN DOZENS OF WAYS

Chestable

DUAL PURPOSE CHEST & TABLE

GIVES YOU MORE ROOM
to EAT, to WORK, to PLAY

in your HOME or APARTMENT



STUDIO KITCHENETTE

When a single room must satisfy all your living needs, Hubbell's Chestable is a happy answer to the dining problem. It requires only six square feet of precious floor space when not in use. It's a charming addition to your room decor. And it places hospitality on a new, pleasant level of dignity.



LIVING-DINING ROOM

The Chestable is a dual-purpose piece for a dual-purpose room! To the casual visitor, it's a handsome, compact wall cabinet in your uncluttered living room. Come mealtime, it shows its true colors — then folds away again, slick and trim as can be!



AS A ROOM DIVIDER

Perhaps you really want to separate a long, narrow room into living and dining areas. Use Chestable as a room divider with the drop leaf side constantly ready for use in dining — the drawer side for convenient storage of silver and linens on the kitchen side.



BREAKFAST ROOM

Here space is always at a premium. Chestable eliminates the need for a permanent table, and it comes in mighty handy when your kitchen gets especially busy! The mar-proof Formica top can really "take it" from hot dishes and sharp utensils.

Build WITH PLANS TO INCLUDE THIS SPACE-SAVING "DUAL PURPOSE" CHESTABLE

Yes, Chestable can save you hundreds of dollars when you build or remodel! Did you know that you can order Chestable unfinished, without Formica on the 24" x 36" chest top, for inclusion in your built-in bar or cupboard assembly? That's right — prices on request! No longer need you sacrifice that gracious uncrowded look for a cumbersome dining table. Use that space for real living — get more for your money — you save two ways when you plan with Chestable, available *only* direct from the factory.

BUY DIRECT FROM H. L. HUBBELL MANUFACTURING CO.
ZEELAND, MICHIGAN